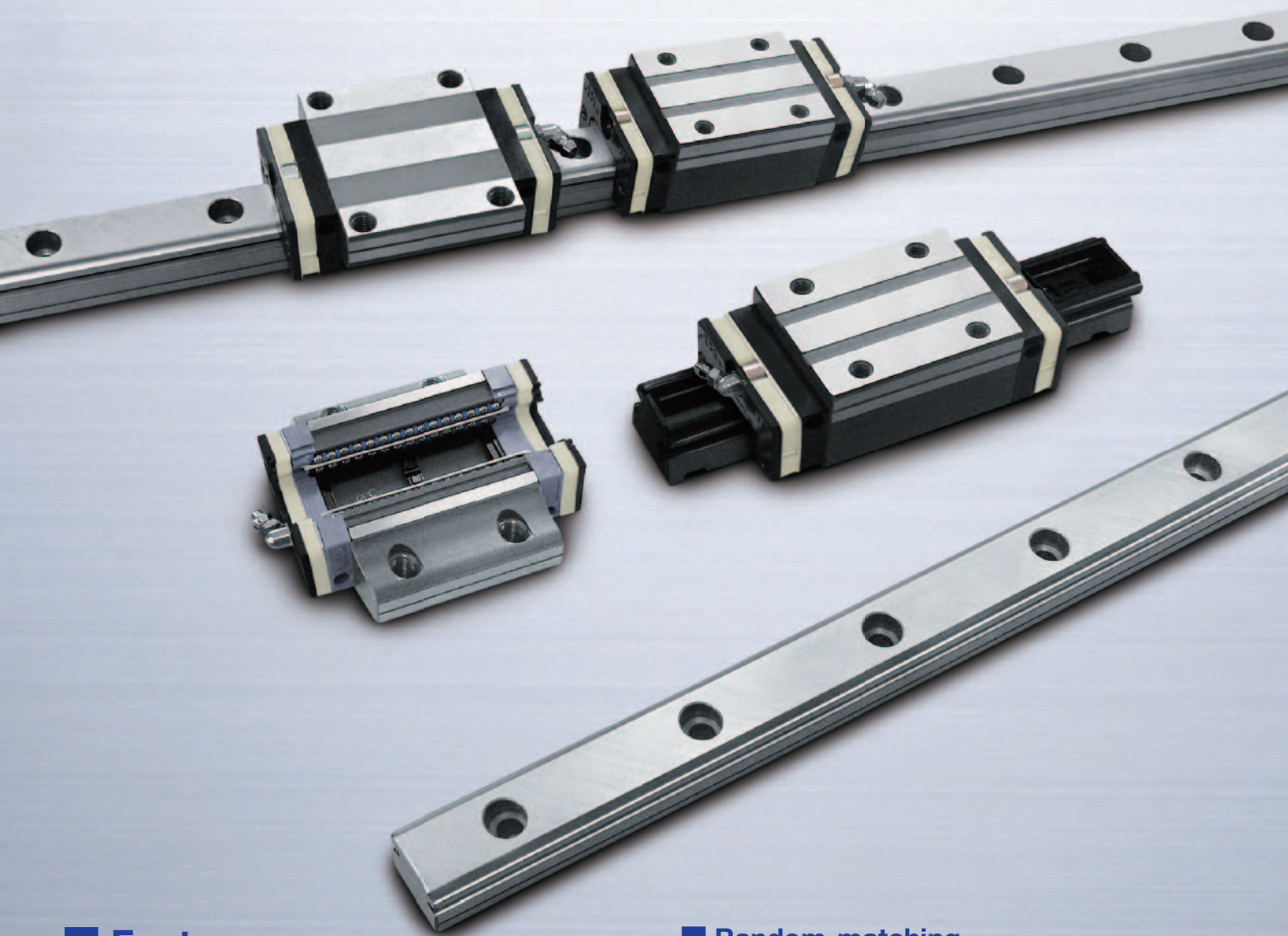


NSK Linear Guides™

Random-matching



Precision grade / Medium preload



■ Features

1. Interchangeable rails and ball slides / Quick delivery

Universal combination between ball slide, accuracy and preload.

2. Self-aligning capability

Compensates for installation errors and enables smooth operation.

3. Wide range of accessories

“NSK K1™” lubrication unit, Double seal, Protector, etc.

■ Random-matching

Combinations of accuracy and preload

Ball slide preload \ Rail accuracy	Slight preload ZZ	Medium preload ZH NEW
Normal grade PC	●	●
Precision grade PH NEW	●	●

NSK Linear Guides™ Random-matching

Line-up of Random-matching

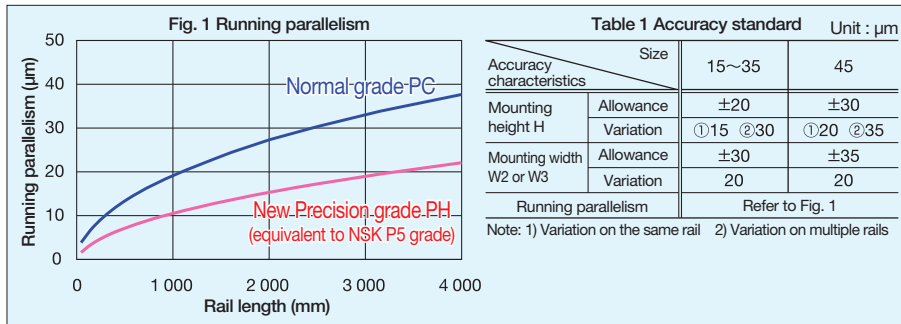
Series	Size	Ball slide model							Accuracy		Preload		
		AN	AL	BN	BL	CL	EM	GM	JM	Precision grade PH	Normal grade PC	Medium preload ZH	Slight preload ZZ
LH	15	○		○						○	○	○	○
	20	○		○						○	○	○	○
	25	○	○	○	○					○	○	○	○
	30	○	○	○	○					○	○	○	○
	35	○	○	○	○					○	○	○	○
SH	15	○		○						○	○	○	○
	20	○		○						○	○	○	○
	25	○	○	○	○					○	○	○	○
	30	○	○	○	○					○	○	○	○
	35	○	○	○	○					○	○	○	○
LS	15		○					○		○	○	○	○
	20		○					○		○	○	○	○
	25		○					○		○	○	○	○
	30		○					○		○	○	○	○
	35		○					○		○	○	○	○
SS	15		○					○		○	○	○	○
	20		○					○		○	○	○	○
	25		○					○		○	○	○	○
	30		○					○		○	○	○	○
	35		○					○		○	○	○	○

Ball slide model

Model	Cross-section shape	Ball slide length
AN AL		
BN BL		
CL		
EM		
GM		
JM		

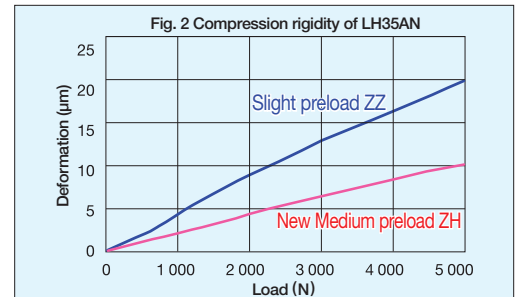
Accuracy

Running parallelism of PH grade is equivalent to P5 grade of NSK matched rail / ball slide assembly. Accuracy grade (running parallelism) can be specified as PH or PC. Assembly accuracy of PH grade is shown below.



Preload and rigidity

The preload can be specified as ZH or ZZ.



Part number

[For rail only]
Example : L1H 25 0520 L C N * PH Z**

Series L1H: LH, SH Series
 L1S: LS, SS Series
 Size: 25
 Rail length (mm): 0520
 Shape L: Standard
 Accuracy grade PH: Precision grade
 PC: Normal grade
 NSK control number: ***
 Butting rail specification N: Non-butting, L: Butting
 Material C: Carbon steel
 Preload Z: Slight preload (Common rail for slight or medium preload)

[For ball slide only]
Example : LAH 25 AN H **

Series LAH: LH Series
 SAH: SH Series
 LAS: LS Series
 SAS: SS Series
 Shape/height AN, AL, BN, BL, CL, EM, GM, JM
 Size: 25
 Preload Z: Slight preload, H: Medium preload
 NSK control number: **

[For assembly]
Example : LH 25 0520 AN C 2 * PH H**

Series LH, SH, LS, SS
 Size: 25
 Rail length (mm): 0520
 Shape/height AN, AL, BN, BL, CL, EM, GM, JM
 Material C: Carbon steel
 Accuracy grade PH: Precision grade
 PC: Normal grade
 NSK control number: ***
 Number of ball slides per rail: 2
 Preload Z: Slight preload
 H: Medium preload

Table 2 Preload Unit : µm

Series	Size	Slight preload ZZ	Medium preload ZH
LH	15	-4 ~ 0	-8 ~ -3.5
	20	-5 ~ 0	-9 ~ -3.5
	25	-5 ~ 0	-11 ~ -5.5
	30	-7 ~ 0	-13 ~ -6
	35	-7 ~ 0	-14 ~ -7
SH	15	-4 ~ 0	-8 ~ -3.5
	20	-5 ~ 0	-9 ~ -3.5
	25	-5 ~ 0	-11 ~ -5.5
	30	-7 ~ 0	-13 ~ -6
	35	-7 ~ 0	-14 ~ -7
LS	15	-4 ~ 0	-8 ~ -3.5
	20	-4 ~ 0	-7.5 ~ -3
	25	-5 ~ 0	-9 ~ -3.5
	30	-5 ~ 0	-10 ~ -4.5
	35	-6 ~ 0	-12 ~ -5
SS	15	-4 ~ 0	-
	20	-4 ~ 0	-
	25	-5 ~ 0	-
	30	-5 ~ 0	-
	35	-6 ~ 0	-

For more information about NSK products, please contact:

www.nsk.com



NSK used environmentally friendly paper and printing methods for this publication.